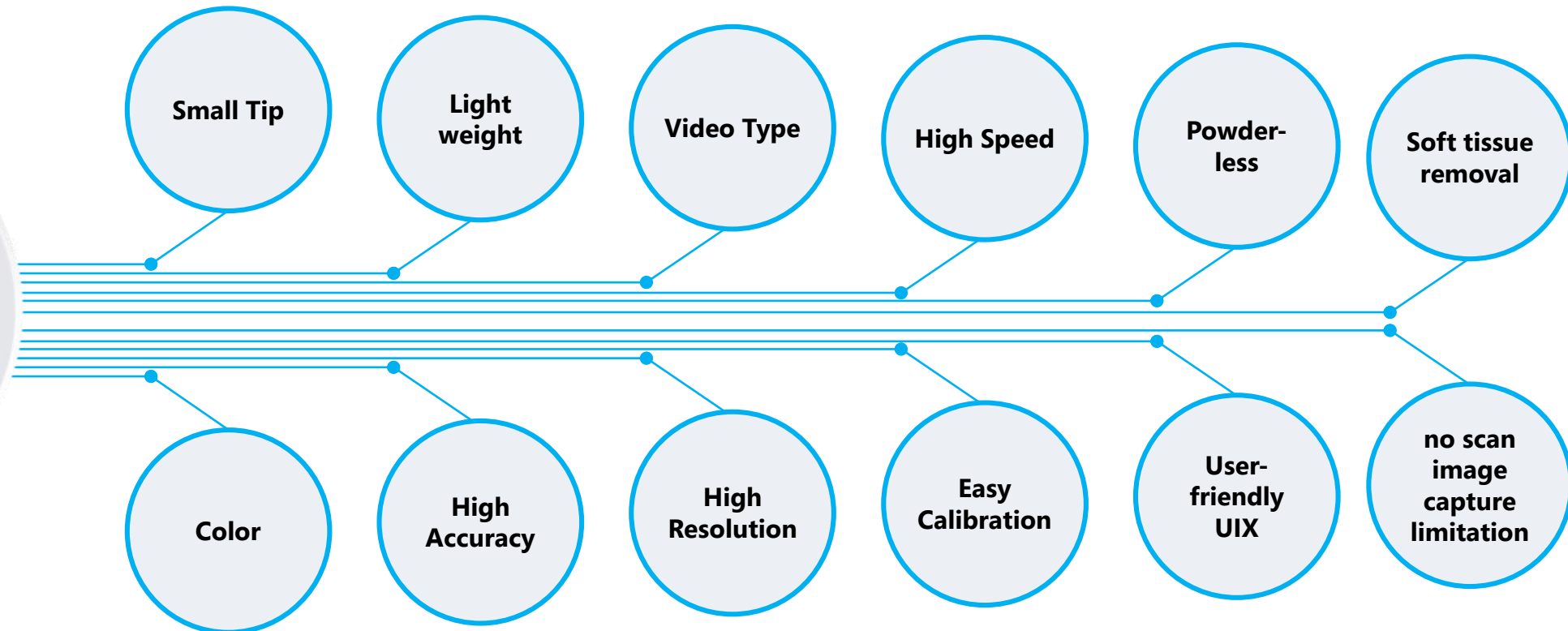


MEDIT i500

The easiest Decision in Digital Dentistry

Features & Highlights



MEDIT i500

The Gateway to our Digital Dental Platform

Spec Data

Small Tip & Lightweight

Tip Size: 19 x 15.2 mm
Hand piece Weight: 276g

Comfortable & Productive

Scanning Volume: 14 x 13 mm
Scan Distance: Touch & Hover

HD Video & Real Color

3D in motion video
3D full color streaming

High Speed & Accuracy

Accuracy: Single Die < 10 Micron
Full Arch < 100 Micron
Scan time: Quadrant = 2-3 Min
Full Arch = 4-6 Min

Open & Convenient

Open System
Powder Free

Disinfection & Ortho readiness

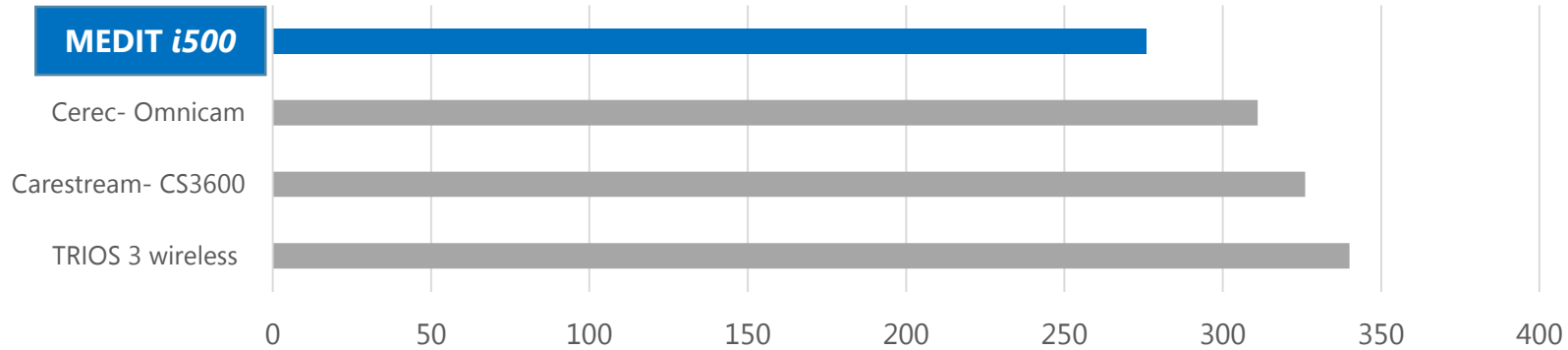
Tip 20x Autoclavable
Ready for all Orthodontic uses



MEDIT i500

The Gateway to our Digital Dental Platform

Wand Weight (in grams)



Tip Size



Camera Comparison



	Medit i500	TRIOS 3 wireless	Cerec- Omnicam	Carestream- CS3600
Size of Scanner head	19x15.2	23x20	16.5x16.5	20x17
Wand Weight	276 g	340 g	311 g	326 g
Annual fee	No	\$125 - \$375 / Month	\$199 / Month	No
Data capture principle:	Triangulation	Confocal laser Technology	Triangulation	Triangulation
Full Arch Scan time (U+L+B)	5 min	5 min	8-10 min	8-10 min

Camera Comparison

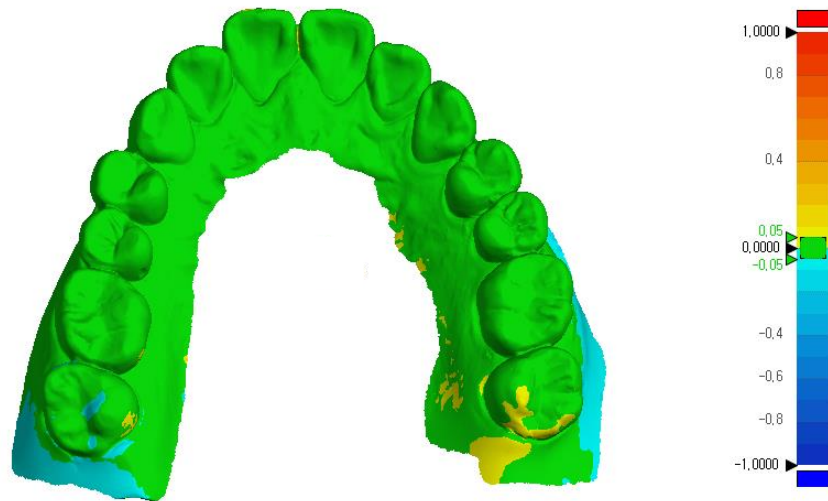


	Medit i500	TRIOS 3 wireless	Cerec- Omnicam	Carestream- CS3600
Cloud services	Included	Included	Optional	N/A
System	Open	Semi-open	Closed	Open
Payment system	Integrated	No	No	No
Workflow Mgmt.	Integrated	Yes	Optional	No
Amortization time	2 Years	5+ Years	3.5+ Years	3 Years

Accuracy & Precision **MEDIT i500**

i500 Stone Model Tests

0.05mm Tol Deviation of Full Arch



Trueness (Arch) $22.1 \pm 1.47 \mu\text{m}$
Trueness (Die) $8.82 \pm 0.69 \mu\text{m}$
Precision (Die) $4.87 \pm 1.69 \mu\text{m}$

Test results under ADA 132

