

DENTRI^{max}



3D Imaging

MAX 18x16.5 cm FOV, perfect for capturing most maxillofacial structures



PANO with Autofocus

2D panoramic feature with Autofocus for minimized distortion



Bitewings

Extraoral bitewing images for better patient comfort



Cephalometric X-ray(optional)

Optional cephalometric arm attachment, excellent diagnostic images for orthodontic practice



Model Scan Option

Model CBCT Scan for STL extraction

✓ Field of View

Expansive FOV 18x16.5 cm maximizes your practice. Dentri Max provides you with various FOV size options from 3x3 cm to 18x16.5 cm



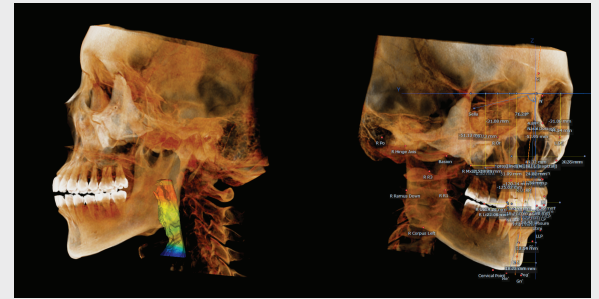
Free FOV
(3x3 cm - 12x9 cm)



16x9 cm
Dental Arch mode



18x16.5 cm
Dental Arch mode

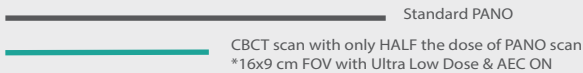


18x.16.5 cm
Airway Analysis

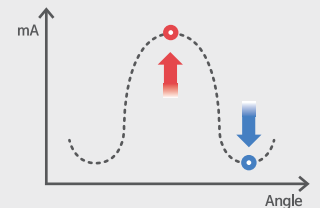
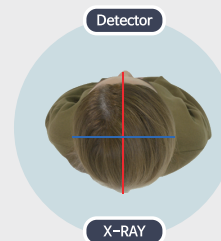
18x.16.5 cm
3D Cephalometric analysis

✓ Low Dose Radiation

An additionally equipped filter & Adaptive Exposure Control(AEC) technology significantly reduces radiation exposure. HDX WILL's imaging reconstruction still allows superior image quality.

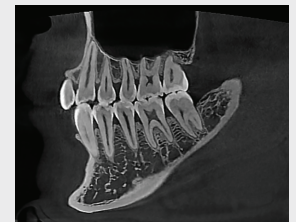


Adaptive Exposure Control(AEC)



✓ Superior Image Quality

HDX WILL's state of the art imaging reconstruction algorithm finds the best value of each voxel and enhances image contrast and sharpness.



✓ PrecisionMAR

PrecisionMAR™ offers unprecedented clarity around metal, improving diagnostics and planning.

- Minimal scatter
- Reduced shading artifact
- Clearly define bone and teeth structures around metal



Dedicated 2D Panoramic X-ray



Auto Focus
Minimized distortion,
Maximized ability to
obtain clear images



Bitewings
Extraoral Bitewing
options

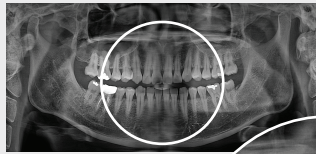


TMJ
TMJ diagnostic x-ray



Low Dose Mode
Rapid scan time,
Minimized dosage to
patient

Auto Focus

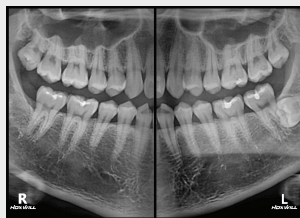


Auto Focus OFF

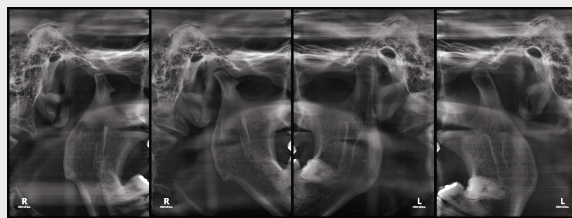


Auto Focus ON

Bitewings



TMJ



Cephalometric X-ray(Optional)

Various cephalometric x-ray options with auto landmark tracing feature*.
Scan type & One-shot type available.

*Auto Tracing - Available with Willceph software purchase.

Function	CBCT + PANORAMA + Cephalometric X-ray(Scan type, Optional) + Model Scan + 3D Ceph Module
Focal Spot	0.5 mm
Scan Time	CBCT: 8 s or 12 s, 24 s, 36 s
	Panorama: 14 s or less / Bitewings: 8 s or less / TMJ: 6 s or less
	Cephalometric X-ray(Optional): 8 s or less(Scan Type) / 0.5 s ~ 2 s (One-Shot Type)
FOV size(DxH)	18 × 16.5 cm(Stitch), 16 x 9 cm(Non-Stitch), Free FOV (min. 3 × 3 cm)
Voxel Size(CT)	0.1 - 0.3 mm
Tube Voltage	60 kV - 90 kV
Tube Current	4 mA - 10 mA
Dimension(WxDxH)	DENTRI Max: 1201 mm × 1361 mm × 2455 mm (47.3" × 53.6" × 96.7")
	DENTRI C MAX: 1999 mm × 1361 mm × 2455 mm (78.7" × 53.6" × 96.7")
	DENTRI S MAX: 1941 mm × 1361 mm × 2455 mm (76.4" × 53.6" × 96.7")