



3D Imaging

MAX 16x9 cm FOV, perfect for capturing dentition, sinus, or TMJ



Bitewings

Extraoral bitewing images for better patient comfort



Model Scan Option

Model CBCT Scan for STL extraction



PANO with Autofocus

2D panoramic feature with Autofocus for minimized distortion

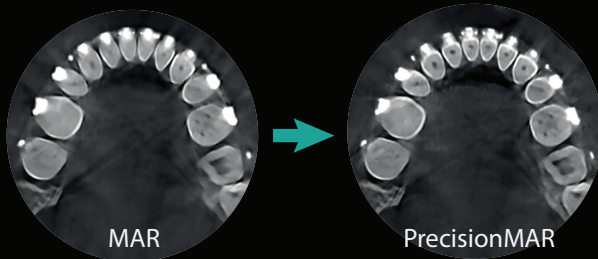


Cephalometric X-ray(optional)

Optional cephalometric arm attachment, excellent diagnostic images for orthodontic practice

Superior Image Quality

HDX WILL's state of the art imaging reconstruction algorithm finds the best value of each voxel and enhances image contrast and sharpness.



PrecisionMAR

PrecisionMAR™ offers unprecedented clarity around metal, improving diagnostics and planning.

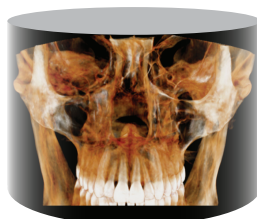
- Minimal scatter
- Reduced shading artifact
- Clearly define bone and teeth structures around metal

CBCT FOV(Field of View) Size

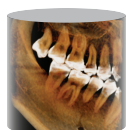
Wide 16x9 cm FOV allows for the entire dentition, TMJ, Nose, Ear or Pediatric dental arch to be captured in one scan. Various options are available from 3x3cm to 16x9cm FOV



16x9 cm
Dental Arch mode



16x9 cm
Nose / Ear Mode



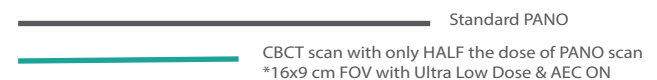
Free FOV
(3x3 cm - 12x9 cm)



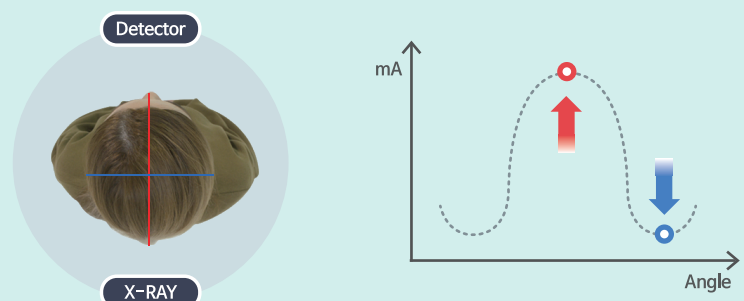
10x8 cm
Child Mode

Low Dose Radiation

An additionally equipped filter & Adaptive Exposure Control(AEC) technology significantly reduces radiation exposure. HDX WILL's imaging reconstruction still allows superior image quality.



Adaptive Exposure Control(AEC)



Dedicated 2D Panoramic X-ray



Auto Focus
Minimized distortion,
Maximized ability to
obtain clear images



Bitewings
Extraoral Bitewing
options

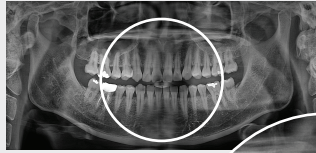


TMJ
TMJ diagnostic x-ray

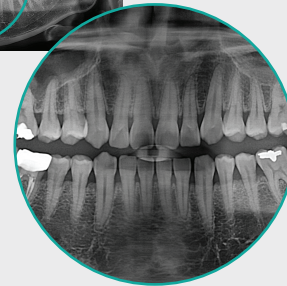


Low Dose Mode
Rapid scan time,
Minimized dosage to
patient

Auto Focus

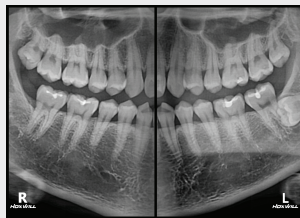


Auto Focus OFF

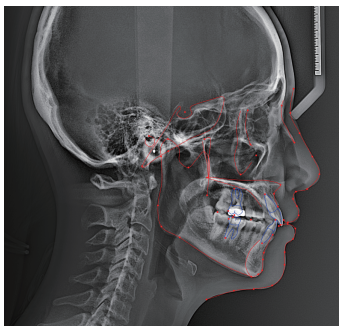
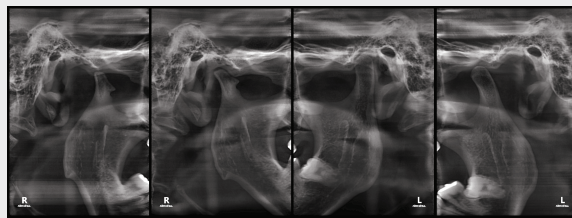


Auto Focus ON

Bitewings



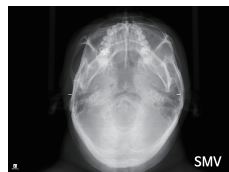
TMJ



Cephalometric X-ray(Optional)

Various cephalometric x-ray options with auto landmark tracing feature*

*Auto Tracing - Available with Willceph software purchase



Function	CBCT + PANORAMA + Cephalometric X-ray(Scan type, Optional) + Model Scan
Focal Spot	0.5 mm
Scan Time	CBCT: 8 s or 12 s, 24 s
	Panorama: 14 s or less / Bitewings: 8 s or less / TMJ: 6 s or less
	Cephalometric X-ray(Optional): 8 s or less(Adult) / 6 s or less(Child)
FOV size(DxH)	16x9 cm or 12x9 cm, 10x8 cm(Child), Free FOV (Min. 3x3 cm)
Voxel Size(CT)	0.1 - 0.3 mm
Tube Voltage	60 kV - 90 kV
Tube Current	4 mA - 10 mA
Dimension(WxDxH)	Eco-X: 980 mm × 1225 mm × 2314 mm(38.6 "× 48.3 "× 91.1 ")
	Eco-X S:1802 mm × 1225 mm × 2314 mm(71 "× 48.3 "× 91.1 ")